

NOTE: FOR SECTIONS & DETAILS SEE DRAWINGS: 03-1031.301
 03-1031.302
 03-1031.303

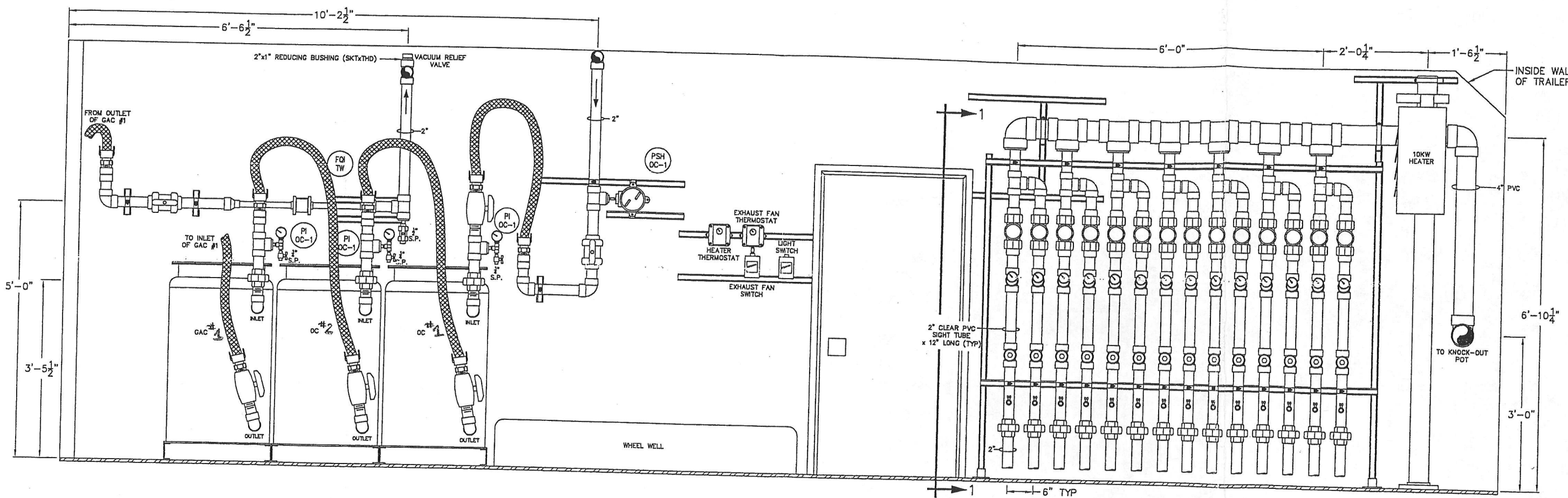
ORIGINAL
 IF IN BLUE INK

REVISIONS					REFERENCES			GMG	GMG CORPORATION 800 HART VALLEY DRIVE NEW KENNESAW, PA 15058 OFFICE: (724) 334-7740 FAX: (724) 334-7744	UNION PACIFIC RAILROAD	FUELING PLATFORM GROUND WATER REMEDATION TRAILER PLAN VIEW & GENERAL ARRANGEMENT		
NO.	DATE	DESCRIPTION	BY	CHKD.	APPD.	NO.	DATE				DESCRIPTION	BY	CHKD.
A	12/8/03	FOR APPROVAL	NRR	GMG	GMG								
B	1/05/04	REVISED PER ENGINEER'S COMMENTS	NRR	GMG	GMG								
C	4/01/04	AS BUILT	NRR	GMG	GMG								

PROJ. LOC.	NORFOLK, NEBRASKA	PROJ. NO.	03-1061
DRAWN BY	NRR	DATE	12/10/03
DWG. CHKD. BY	GMG	DES. CHKD. BY	
APPD. BY	GMG	DRAFT. APPRVL.	

DATE	12/10/03	REVISION	
SCALE	N.T.S.		
	03-1061.300		①

THIS DRAWING AND DESIGN IS THE PROPERTY OF GMG CORPORATION AND IS NOT TO BE REPRODUCED IN WHOLE OR PART, NOR EMPLOYED FOR ANY PURPOSE OTHER THAN SPECIFICALLY PERMITTED IN WRITING BY GMG CORPORATION. THIS DRAWING LOANED SUBJECT TO RETURN ON DEMAND.



SECTION A-A

ORIGINAL
IN BLUE INK

NOTE: FOR GENERAL ARRANGEMENT SEE DRAWING: 03-1031.300

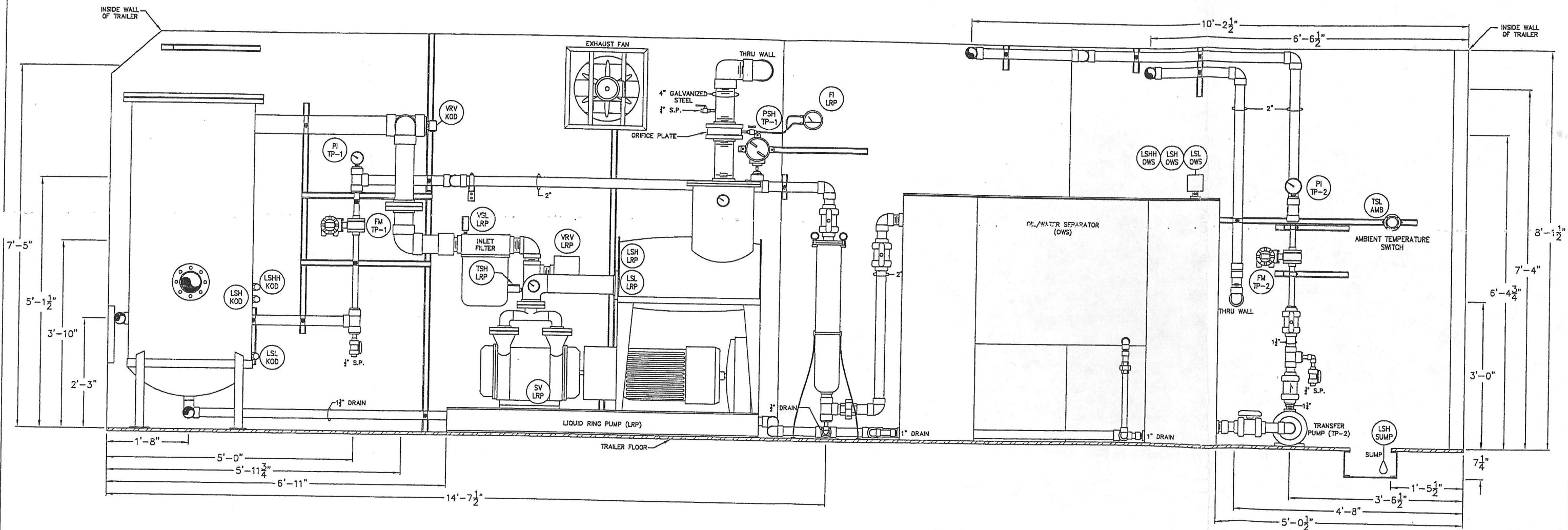
REVISIONS						REFERENCES		GMG CORPORATION		UNION PACIFIC RAILROAD		FUELING PLATFORM GROUND WATER REMEDIATION TRAILER SECTION A-A	
NO.	DATE	DESCRIPTION	BY	CHKD.	APPD.	NO.	DATE	TITLE	DRAWING NO.	PROJ. LOC.	NORFOLK, NEBRASKA	PRCL. NO.	03-1061.301
A	12/8/03	FOR APPROVAL	NRR	GMG	GMG					800 HUNT VALLEY CIRCLE NEW BIDSINGTON, PA. 15068 OFFICE: (724) 334-7740 FAX: (724) 334-7744			
B	1/25/04	REVISED PER ENGINEER'S COMMENTS	NRR	GMG	GMG								
C	4/20/04	AS BUILT	NRR	GMG	GMG								

THIS DRAWING AND DESIGN IS THE PROPERTY OF GMG CORPORATION AND IS NOT TO BE REPRODUCED IN WHOLE OR PART, NOR EMPLOYED FOR ANY PURPOSE OTHER THAN SPECIFICALLY PERMITTED IN WRITING BY GMG CORPORATION. THIS DRAWING LOANED SUBJECT TO RETURN ON DEMAND.

PROJ. LOC. NORFOLK, NEBRASKA
 PRCL. NO. 03-1061.301
 DATE 12/10/03
 SCALE 1/2" = 1'-0"

03-1061.301

REVISION
D



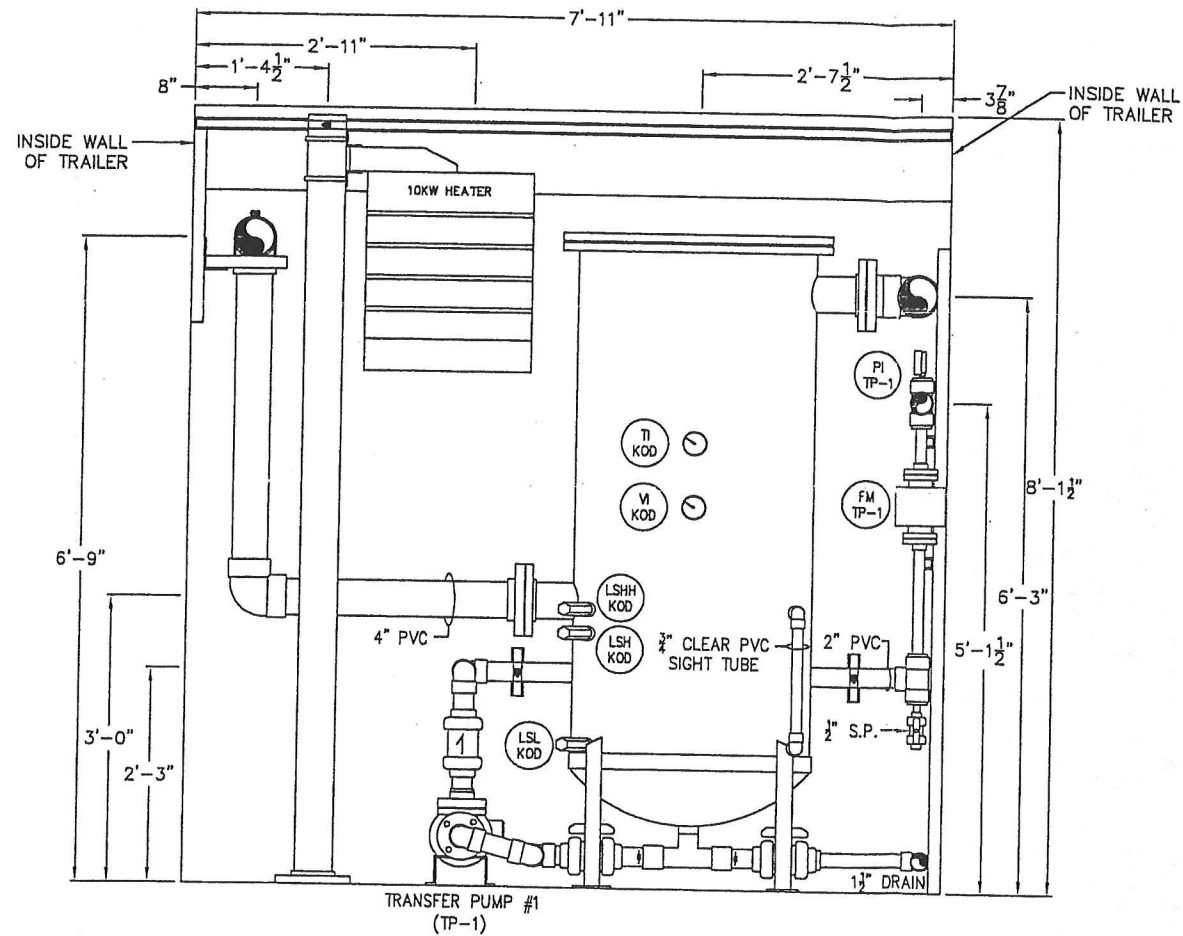
SECTION B-B

ORIGINAL
IF IN BLUE INK

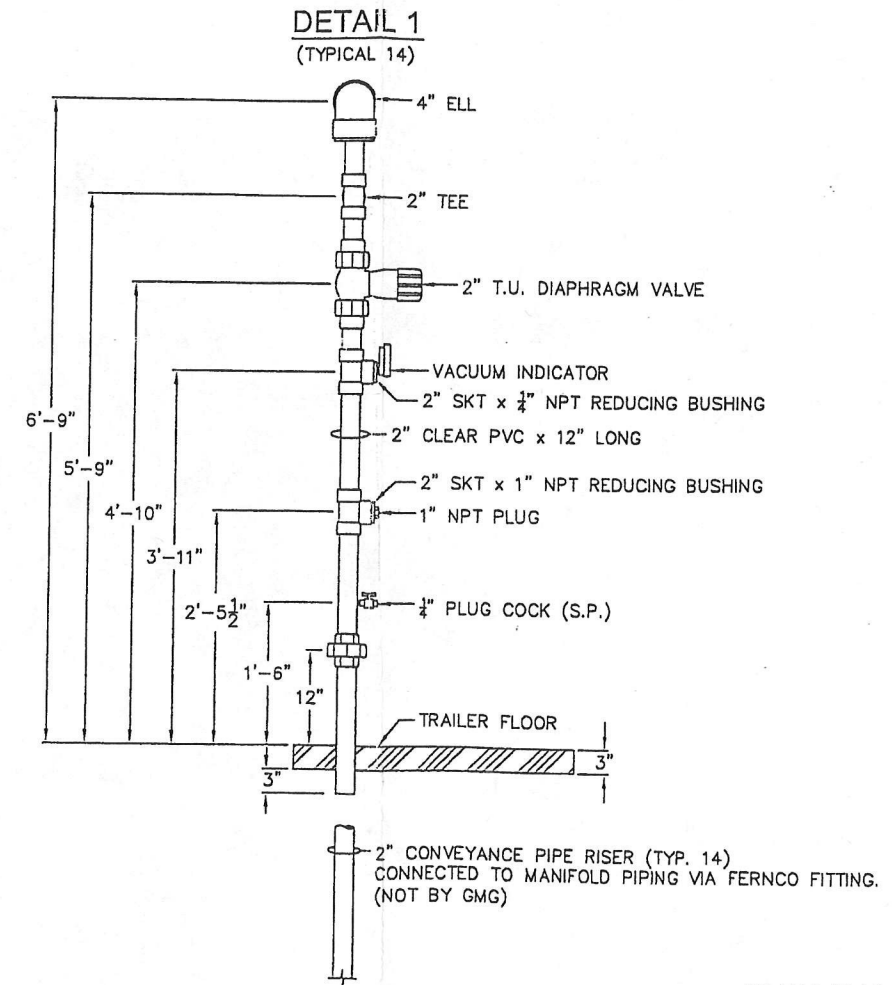
NOTE: FOR GENERAL ARRANGEMENT SEE DRAWING: 03-1031.300

REVISIONS						REFERENCES							
NO.	DATE	DESCRIPTION	BY	CHKD.	APPD.	NO.	DATE	DESCRIPTION	BY	CHKD.	APPD.	TITLE	DRAWING NO.
A	12/8/03	FOR APPROVAL	NRR	GMC	GMC								
B	1/05/04	REVISED PER ENGINEER'S COMMENTS	NRR	GMC	GMC								
D	4/01/04	AS BUILT	NRR	GMC	GMC								

GMG GMG CORPORATION 800 HUNT VALLEY CIRCLE NEW KENNESAW, PA 15068 OFFICE (724) 334-7740 FAX (724) 334-7744		UNION PACIFIC RAILROAD PROJ. LOC. NORFOLK, NEBRASKA PROJ. NO. 03-1061		FUELING PLATFORM GROUND WATER REMEDIATION TRAILER SECTION B-B 03-1061.302	
THIS DRAWING AND DESIGN IS THE PROPERTY OF GMG CORPORATION AND IS NOT TO BE REPRODUCED IN WHOLE OR PART, NOR EMPLOYED FOR ANY PURPOSE OTHER THAN SPECIFICALLY PERMITTED IN WRITING BY GMG CORPORATION. THIS DRAWING LOANED SUBJECT TO RETURN ON DEMAND.		DATE 12/10/03 SCALE 1/2" = 1'-0"		REVISION 0	



SECTION C-C

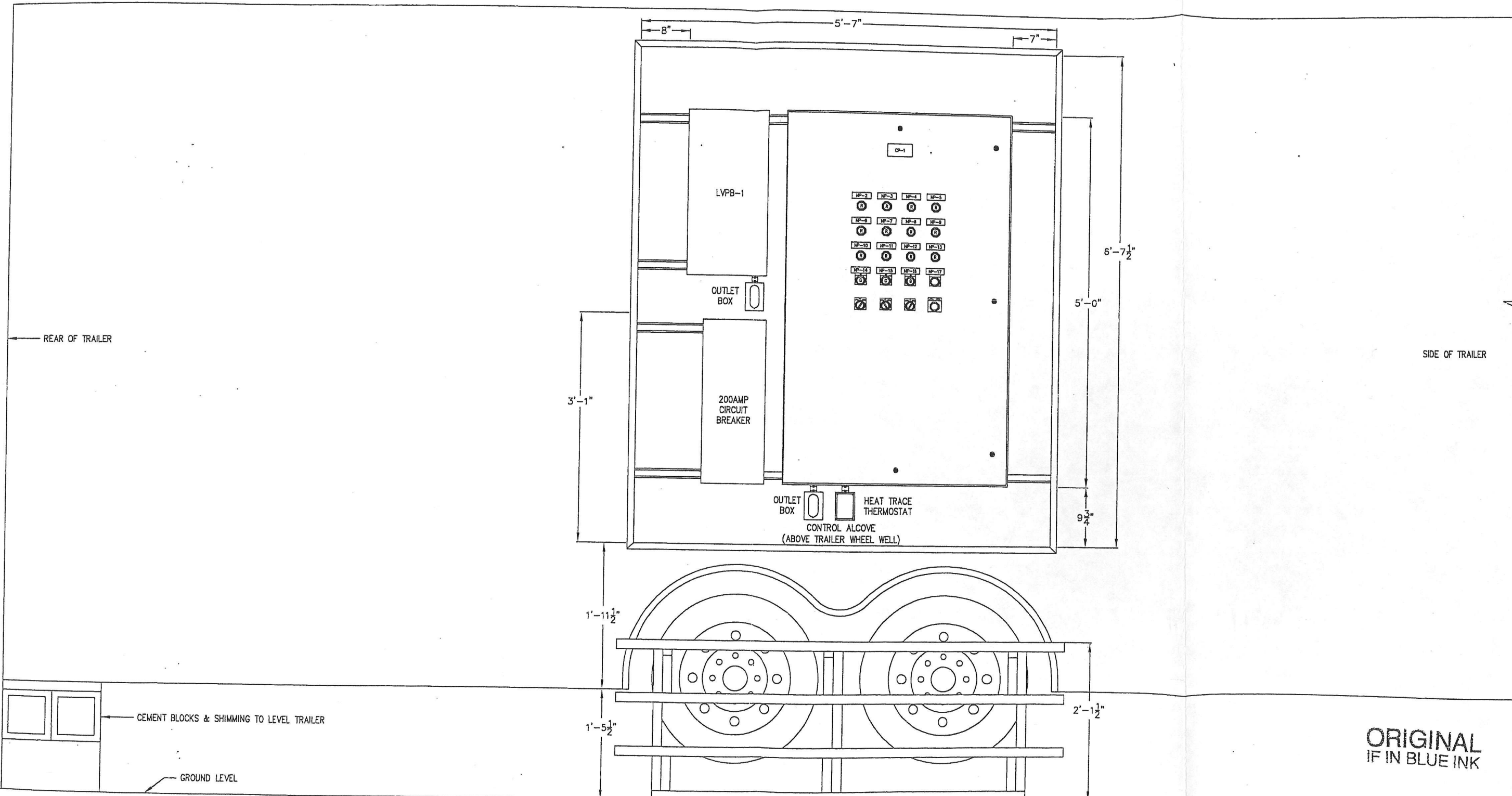


ORIGINAL
IF IN BLUE INK

NOTE: FOR GENERAL ARRANGEMENT SEE DRAWING: 03-1031.300

REVISIONS					REFERENCES								
NO.	DATE	DESCRIPTION	BY	CHKD.	APPD.	NO.	DATE	DESCRIPTION	BY	CHKD.	APPD.	TITLE	DRAWING NO.
A	12/8/03	FOR APPROVAL	NRR	GMG	GMG								
B	7/05/04	REVISED PER CUSTOMER'S COMMENTS	NRR	GMG	GMG								
C	4/01/04	AS BUILT	NRR	GMG	GMG								

GMG GMG CORPORATION 800 HUNT VALLEY CIRCLE NEW KENSINGTON, PA 15066 OFFICE: (724) 334-7740 FAX: (724) 334-7744		UNION PACIFIC RAILROAD PROJ. NO. 03-1061		FUELING PLATFORM GROUND WATER REMEDIATION TRAILER SECTION C-C & DETAIL 1	
THIS DRAWING AND DESIGN IS THE PROPERTY OF GMG CORPORATION AND IS NOT TO BE REPRODUCED IN WHOLE OR PART, NOR EMPLOYED FOR ANY PURPOSE OTHER THAN SPECIFICALLY PERMITTED IN WRITING BY GMG CORPORATION. THIS DRAWING LOANED SUBJECT TO RETURN ON DEMAND.		PROJ. LOC. NORFOLK, NEBRASKA DRAWN BY NRR 12/10/03 DESIGN BY DWG. CHKD. BY GMG DES. CHKD BY APPD. BY GMG DRFT. APRV'L		DATE 12/10/03 SCALE 1/2" = 1'-0" 03-1061.303	

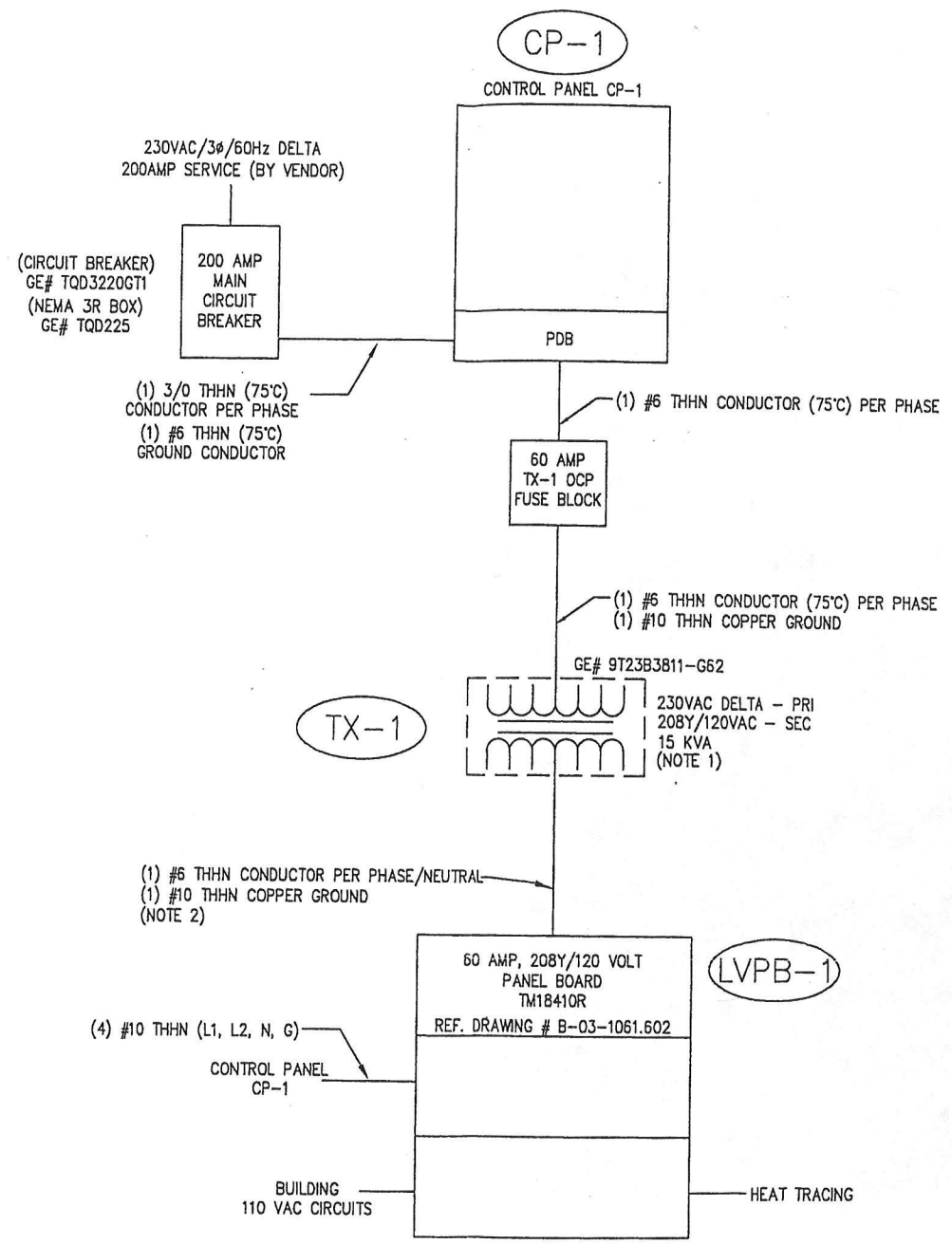


ORIGINAL
IF IN BLUE INK

REVISIONS					REFERENCES								
NO.	DATE	DESCRIPTION	BY	CHKD.	APPD.	NO.	DATE	DESCRIPTION	BY	CHKD.	APPD.	TITLE	DRAWING NO.
A	12/2/03	FOR APPROVAL	NRR	GMG	GMG								
B	1/25/04	REVISED PER ENGINEER'S COMMENTS	NRR	GMG	GMG								
D	4/21/04	AS BUILT	NRR	GMG	GMG								

		GMG CORPORATION 400 HART VALLEY CIRCLE NEW KENNESAW, PA 15068 OFFICE: (724) 334-7740 FAX: (724) 334-7744		UNION PACIFIC RAILROAD		PROJ. NO. 03-1061	
THIS DRAWING AND DESIGN IS THE PROPERTY OF GMG CORPORATION AND IS NOT TO BE REPRODUCED IN WHOLE OR PART, NOR EMPLOYED FOR ANY PURPOSE OTHER THAN SPECIFICALLY PERMITTED IN WRITING BY GMG CORPORATION. THIS DRAWING LOANED SUBJECT TO RETURN ON DEMAND.		PROJ. LOC. NORFOLK, NEBRASKA DRAWN BY NRR 12/10/03 DWG. CHKD. BY GMG APPD. BY GMG		DESIGN BY DES. CHKD. BY DRFT. APPRVL.		DATE 12/10/03 SCALE 3/4" = 1'-0"	

FUELING PLATFORM GROUND WATER REMEDIATION TRAILER CONTROL SYSTEM LAYOUT			03-1061.600	REVISION ①
--	--	--	-------------	------------



NOTE:
 1. BOND NEUTRAL TO GROUND AND GROUND TO SITE GROUNDING GRID VIA #2 COPPER CONDUCTOR.
 2. MUST BE INSTALLED PER NEC 240.21 (C)(1-6)

NO.	DATE	DESCRIPTION	BY	CHKD.	APPD.	NO.	DATE	DESCRIPTION	BY	CHKD.	APPD.
A	12/10/03	FOR APPROVAL	NRR	GMG	GMG						
B	12/05/04	UPDATED WIRE SIZES	NRR	GMG	GMG						
C	12/01/04	AS BUILT	NRR	MDC	GMG						

REFERENCES	
TITLE	DRAWING NO.

GMG

GMG CORPORATION
 600 HART VALLEY CIRCLE
 NEW HENNINGTON, PA 15068
 OFFICE: (724) 334-7746 FAX: (724) 334-7744

UNION PACIFIC RAILROAD	
PROJ. LOC.	NORFOLK, NEBRASKA
PROJ. NO.	03-1061
DRAWN BY	NRR 12/10/03
DES. CHKD. BY	GMG

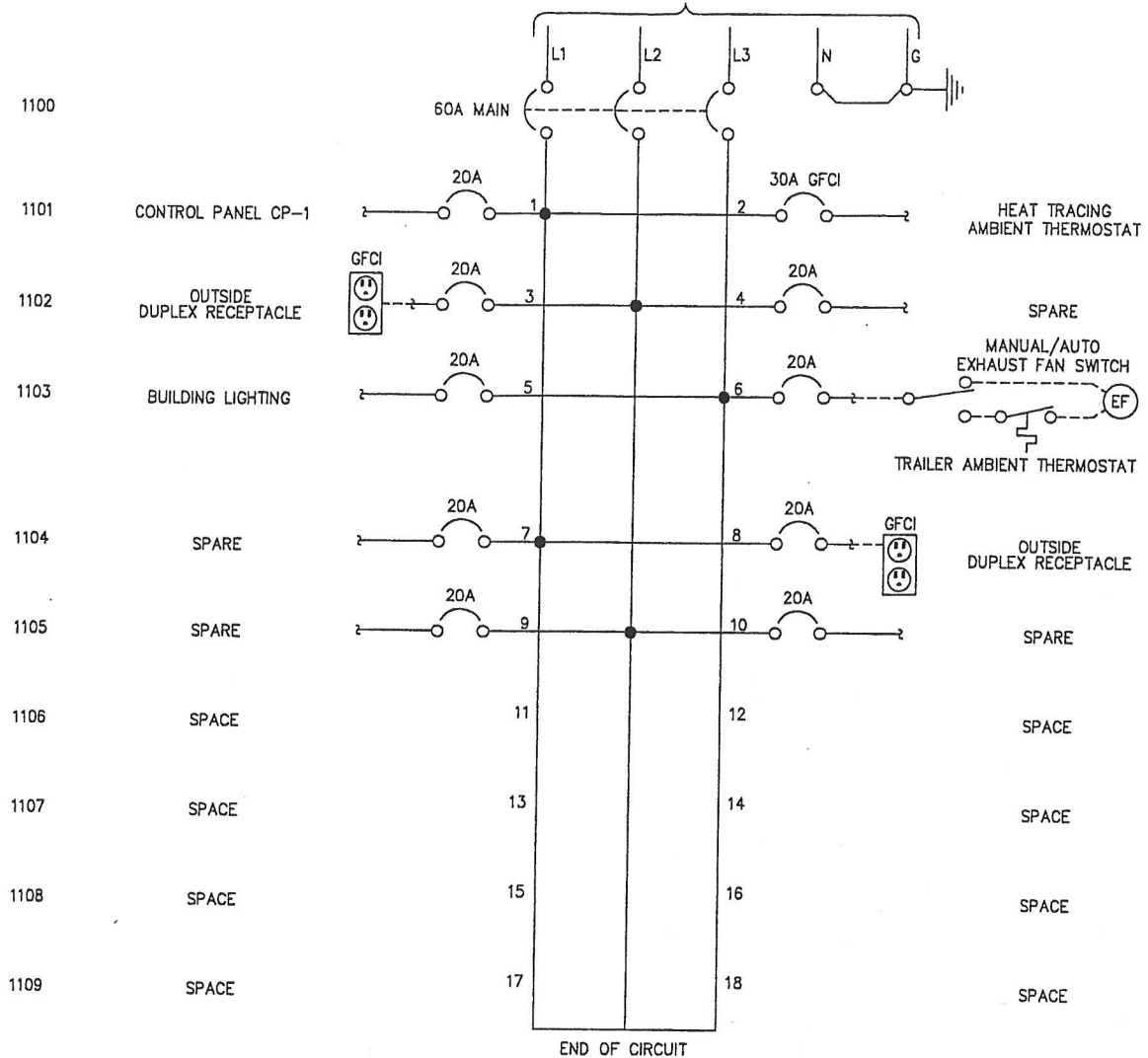
FUELING PLATFORM GROUND WATER
 REMEDIATION TRAILER
 POWER DISTRIBUTION PLAN

DATE 12/10/03
 SCALE

B-03-1061.601

THIS DRAWING AND DESIGN IS THE PROPERTY OF GMG CORPORATION AND IS NOT TO BE REPRODUCED IN WHOLE OR PART, NOR EMPLOYED FOR ANY PURPOSE OTHER THAN SPECIFICALLY PERMITTED IN WRITING BY GMG CORPORATION. THIS DRAWING LOANED SUBJECT TO RETURN ON DEMAND.

208Y/120V, 3Ø, 4 WIRE (#6 THHN 75°C) FROM TRANSFORMER TX-1
 DWG.# B-03-1061.601



REVISIONS

NO	DATE	DESCRIPTION	BY	CHKD.	APPD.	NO	DATE	DESCRIPTION	BY	CHKD.	APPD.
A	12/10/03	FOR APPROVAL	NRR	GMG	GMG						
B	1/05/04	ADDED HEAT TRACE CIRCUIT #2	NRR	GMG	GMG						
C	1/08/04	CUSTOMER COMMENTS	NRR	MDC	GMG						
D	4/01/04	AS BUILT	NRR	MDC	GMG						

REFERENCES

TITLE	DRAWING NO.



GMG CORPORATION
 800 HUNT VALLEY CIRCLE
 NEW KENSINGTON, PA 15069
 OFFICE: (724) 331-7740 FAX: (724) 331-7744

UNION PACIFIC RAILROAD

FUELING PLATFORM GROUND WATER
 REMEDIATION TRAILER
 208/120V POWER DISTRIBUTION LVPB-1

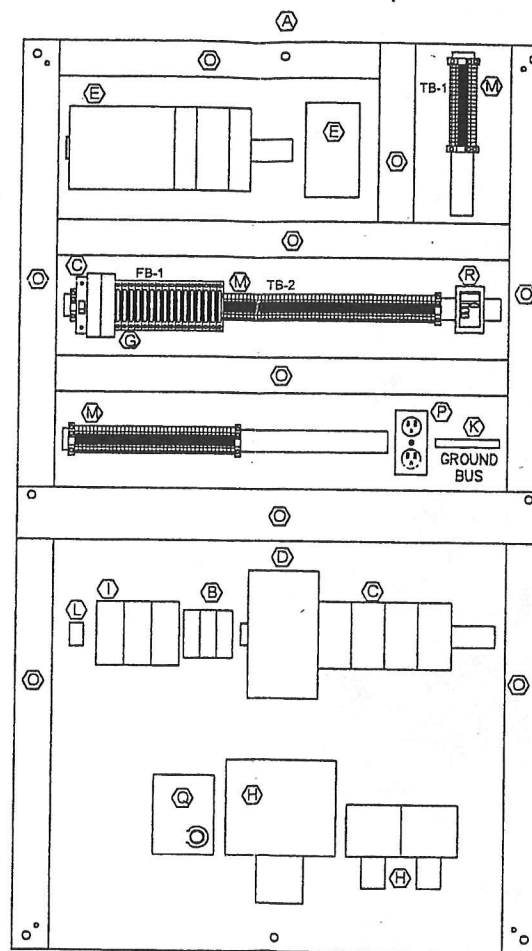
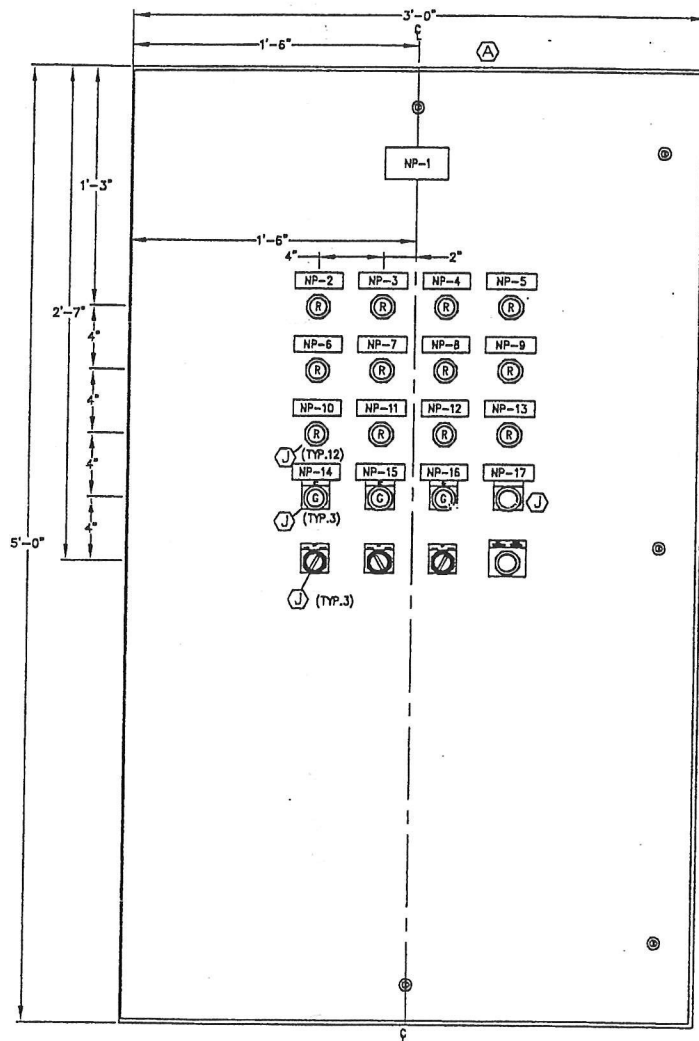
THIS DRAWING AND DESIGN IS THE PROPERTY OF GMG CORPORATION AND IS NOT TO BE REPRODUCED IN WHOLE OR PART, NOR EMPLOYED FOR ANY PURPOSE OTHER THAN SPECIFICALLY PERMITTED IN WRITING BY GMG CORPORATION. THIS DRAWING LOANED SUBJECT TO RETURN ON DEMAND.

PROJ. LOC.	NORFOLK, NEBRASKA	PROJ. NO.	03-1061
DRAWN BY	NRR	DESIGN BY	
DWG. CHKD. BY	GMG	DES. CHKD. BY	

DATE 12/10/03
 SCALE

B-03-1061.602





- BILL OF MATERIALS							
ITEM	QUAN	DESCRIPTION	MANUFACTURER	PART No.	REMARKS		
A	1	ENCLOSURE NEMA 4		SCE-60EL3610LP			
	1	SUB PANEL	SAGINAW	SCE-60P36			
	1	PAD LOCKING HOUSING LATCH		SCE-PLHG			
B	1	FUSE BLOCK	SHAWMUT	US6J2			
	3	FUSE 60 AMP		AJT60			
C	1	CIRCUIT BREAKER 35A 3-P	MERLIN GERIN	60183			
	1	CIRCUIT BREAKER 20A 1-P		60113			
	1	CIRCUIT BREAKER 15A 3-P		60195			
	1	CIRCUIT BREAKER 10A 3-P		60193			
	1	CIRCUIT BREAKER 5A 2-P		60140			
D	1	CIRCUIT BREAKER 125A 3-P	SQUARE D	KAL36125			
	1	ML 1500 RS232 PROCESSOR	ALLEN-BRADLEY	1764-LRP			
1	ML 1500 BASE	1764-24AWA					
1	16 POINT 120VAC INPUT MODULE	1769-IA16					
1	16 POINT AC/DC RELAY OUTPUT MODULE	1769-OW16					
1	4 CHANNEL CURRENT INPUT MODULE	1769-IF4					
1	ML 1500 END CAP	1769-ECR					
1	MICRO-VIEW OPERATOR INTERFACE		2707-MVP232				
F							
G	1	VALVE TRAB TRANSIENT SUPPRESSOR	PHOENIX	28 07 58 6			
	1	VALVE TRAB BARE		28 17 73 8			
	1	VALVE TRAB N-PE		28 17 97 4			
H	2	2HP CONTACTOR (1 N.O./N.C. AUX.)	SQUARE D	LC1D091F7			
	1	25HP CONTACTOR (1 N.O./N.C. AUX.)		LC1D8011F7			
	1	1HP OVERLOAD		LR2D1510			
	1	2HP OVERLOAD		LR2D1512			
	1	25HP OVERLOAD		LR2D3563			
I	1	POWER DISTRIBUTION BLOCK 3-P	SHAWMUT	67633			
	3	SAFETY COVERS		08570			
	12	"PUSH-TO-TEST" RED LIGHT		800T-PT-16R			
J	3	"PUSH-TO-LIGHT" GREEN LIGHT	ALLEN BRADLEY	800T-PT-16G			
	3	3-POSITION SELECTOR SWITCH		800T-J2A			
	3	"HAND-OFF-AUTO" LEGEND PLATE		800T-X511			
	3	"RUN" LEGEND PLATE		800T-X540			
	1	PUSH BUTTON		800T-A2D1			
	1	E-STOP "PUSH-PULL"		800T-FX6D4			
	1	"RESET" LEGEND PLATE		800T-X538			
	1	"PUSH TO STOP" LEGEND PLATE		800T-X648			
	K	1		GROUND BUS	G.E.	TGK24	
	L	1		GROUND LUG	THOMAS & BETTS	TQD225	
M	17	TERMINAL BLOCKS - BLUE	PHOENIX	30 04 38 8			
	1	END CAPS - BLUE		30 03 10 1			
	95	TERMINAL BLOCKS - GRAY		30 04 36 2			
	2	END CAPS- GRAY		30 03 02 0			
	16	FUSE BLOCKS		30 04 17 1			
	6	END ANCHORS		08 00 88 6			
	12 FT	MOUNTING RAIL		08 01 733			
N	3	1A FUSE	SHAWMUT	GGC 1			
	3	5A FUSE		GGC 5			
	6	2A FUSE		GGC 2			
	1	0.5A FUSE (TIME DELAY)		GDL 1/2			
	1	1A FUSE (TIME DELAY)		GDL 1			
	1	2A (TIME DELAY)		GDL 2			
O	3	0.2A FUSE		GGC 2/10			
	18 FT	2x5 WIREWAY W/ COVER	PANDUIT				
12 FT	3x5 WIREWAY W/ COVER						
P	1	ELECTRONIC RECEPTACLE					
Q	1	230VAC 800W PANEL HEATER	HOFFMAN	D-AH8002B			
R	1	DRY RUNNING PROTECTION DEVICE	SEEPEx	SGRTSE 230/115AC; 24VDC			

ORIGINAL
IF IN BLUE INK

- NOTE:
1. PANEL TO BE UL LISTED.
2. POWER REQUIRED: 20AMPS @ 120VAC/1 ϕ /60Hz
190AMPS @ 230VAC/3 ϕ /60Hz

NO	DATE	DESCRIPTION	BY	CHKD.	APPD.	NO	DATE
A	12/10/03	FOR APPROVAL	NR	GMG	GMG		
B	1/14/04	CUSTOMER COMMENTS	NR	GMG	GMG		
D	4/01/04	AS BUILT	NR	MDG	GMG		

REFERENCES	
TITLE	DRAWING NO.

GMG

GMG CORPORATION
800 HART VALLEY DR
NEW KENSINGTON, PA 15066
OFFICE (724) 334-7740 FAX (724) 334-7744

UNION PACIFIC RAILROAD

FUELING PLATFORM GROUND WATER
REMEDATION TRAILER
CONTROL PANEL CP-1 LAYOUT & BILL OF MATERIALS

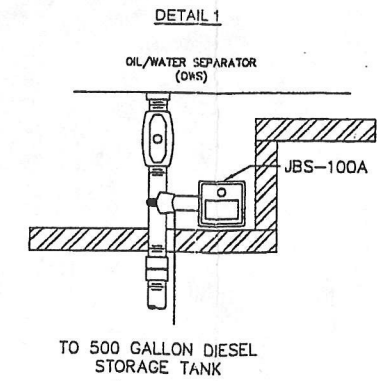
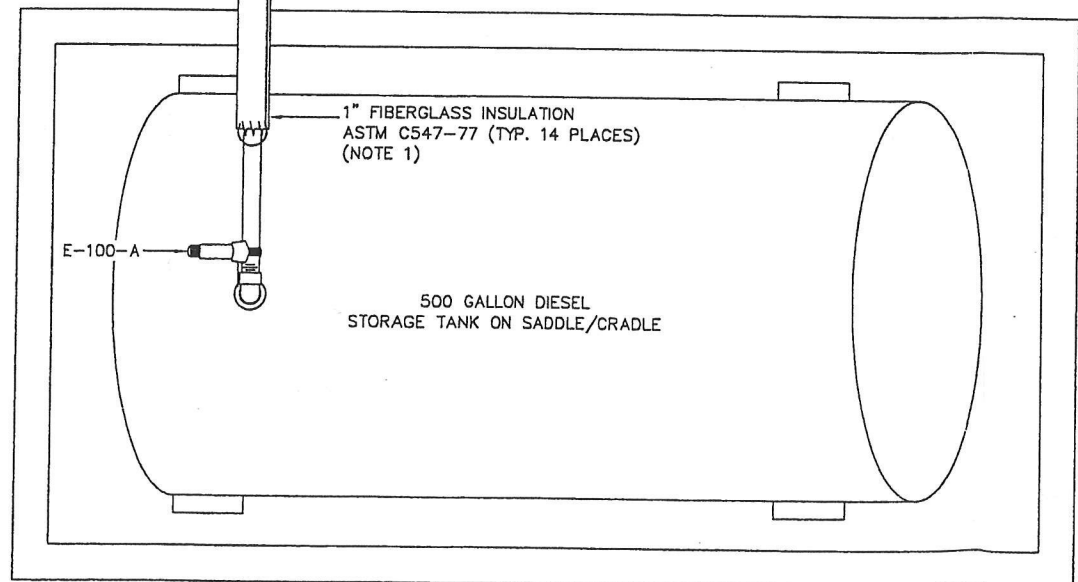
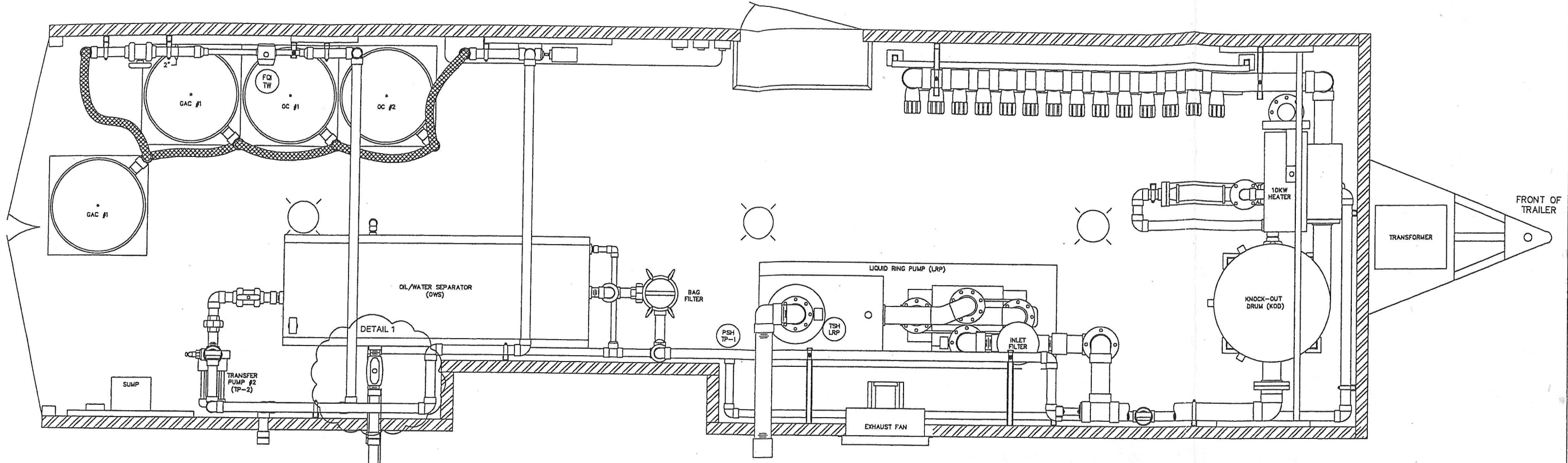
THIS DRAWING AND DESIGN IS THE PROPERTY OF GMG CORPORATION AND IS NOT TO BE REPRODUCED IN WHOLE OR PART, NOR EMPLOYED FOR ANY PURPOSE OTHER THAN SPECIFICALLY PERMITTED IN WRITING BY GMG CORPORATION. THIS DRAWING LOANED SUBJECT TO RETURN ON DEMAND.

PROJ. LOC.	NORFOLK, NEBRASKA	PRJ. NO.	03-1061
DRAWN BY	NR	12/10/03	DESIGN BY
DWG. CHKD. BY	GMG		DES. CHKD BY
APPD. BY	GMG		DRFT. APPRVL.

DATE 12/10/03
SCALE 1" = 1'-0"

B-03-1061.620

REVISION
①



NOTE:
1. INSULATION TO EXTEND ALONG ENTIRE TRACE RUN.

REVISIONS				
NO	DATE	DESCRIPTION	BY	CHKD.
A	12/9/03	FOR APPROVAL	NRR	GMG
D	12/11/04	FOR CONSTRUCTION	NRR	MDG

REFERENCES				
TITLE	BY	CHKD.	APPD.	DRAWING NO.

GMG

GMG CORPORATION
600 HUNT VALLEY CIRCLE
NEW KENNESBURG, PA 15058
OFFICE: (724) 334-7740 FAX: (724) 334-7744

THIS DRAWING AND DESIGN IS THE PROPERTY OF GMG CORPORATION AND IS NOT TO BE REPRODUCED IN WHOLE OR PART, NOR EMPLOYED FOR ANY PURPOSE OTHER THAN SPECIFICALLY PERMITTED IN WRITING BY GMG CORPORATION. THIS DRAWING LOANED SUBJECT TO RETURN ON DEMAND.

UNION PACIFIC RAILROAD			
PROJ. LOC.	NORFOLK, NEBRASKA	PROJ. NO.	03-1061
DRAWN BY	NRR	DESIGN BY	12/10/03
DWG. CHKD. BY	GMG	DES. CHKD BY	
APPD. BY	GMG	DRAFT. APPROVL	

FUELING PLATFORM GROUND WATER REMEDIATION TRAILER HEAT TRACING LAYOUT SHEET No.2			
DATE	12/10/03	REVISION	0
SCALE	N.T.S.	DRAWING NO.	03-1061.631