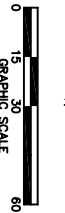
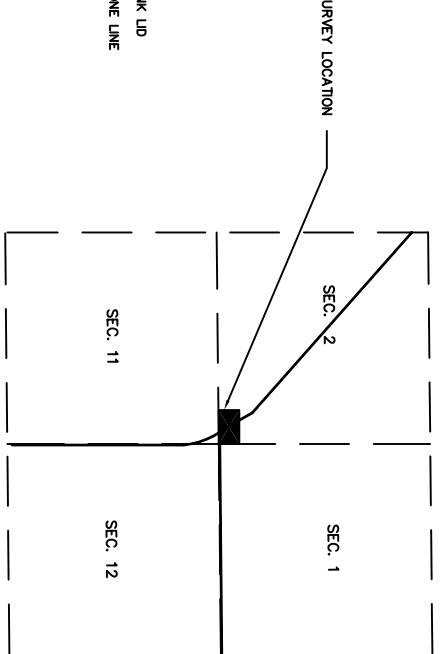


TOPOGRAPHIC SURVEY



**LEGEND**

- UNDERGROUND GAS TANK LID
- UNDERGROUND TELEPHONE LINE
- FENCE
- WATER LINE
- SANITARY SEWER LINE
- TELEPHONE PEDESTAL
- POWER POLE
- LIGHT POLE
- GUY WIRE
- SANITARY SEWER MANHOLE
- CORRUGATED METAL CULVERT PIPE
- MONUMENT FOUND, AS NOTED
- PROPERTY LINE
- SECTION LINE
- OVERHEAD ELECTRIC LINE
- UNDERGROUND ELECTRIC LINE
- GAS LINE
- YARD HYDRANT
- MONITORING WELL
- DECIDUOUS TREE, SIZE DENOTED
- CONIFEROUS TREE, SIZE DENOTED



**LOCATION MAP**

SCALE: NONE

**NOTE:**  
Underground utilities shown on this drawing were surveyed from points located in the field from the local utility companies field locators or were compiled from drawings supplied by the local utility companies and public works department, and are shown in their approximate locations. Other underground improvement locations are unknown.

**UTILITY CONTACTS:**

**ELECTRICITY** - Cornhusker Public Power  
 1-800-985-2773 or (402) 562-2821  
 Telephone -- NE Nebraska Telephone & Cable TV  
 (1-888-387-4321)

**BENCH MARK:**

USGS CAP  
 STAMPED 1951 5 MHV TT  
 ELEV. 2068.0  
 7.150 feet of the NW Corner of Section 12  
 7.150 feet of the NW Corner of the South edge  
 of Highway Paving

MONITORING WELL ID	NORTHING	EASTING	ELEVATION AT TOP OF MONITORING WELL CAP	ELEVATION AT TOP OF NORTH EDGE OF PVC PIPE
OW-1	3769.61	2636.46	2070.07	2069.66
OW-2	3767.17	2614.57	2070.13	2069.71
RW-1	3769.81	2646.15	2070.12	2069.81
EW-1	3668.04	2724.67	2071.31	2070.94
SV-1	3668.20	2730.48	2071.26	2070.93
SV-2	3668.53	2736.59	2071.25	2070.92
SV-3	3668.55	2744.77	2071.28	2071.03
OW-1	3675.89	2722.27	2071.01	2070.81
OW-2	3704.11	2736.49	2070.95	2070.86
OW-3	3725.93	2708.61	2071.13	2070.78
OW-4	3790.68	2711.96	2070.11	2069.85
OW-5	3682.81	2764.77	2070.94	2070.69
OW-6	3662.52	2678.79	2071.46	2071.22
OW-7	3725.67	2636.05	2070.66	2070.24
OW-8	3798.81	2645.64	2070.09	2069.71
OW-9	3682.14	2745.18	2071.65	2071.22
OW-10	3814.11	2778.51	2071.44	2071.00
OW-11	3794.04	2787.48	2071.81	2071.40
OW-12	3748.33	2818.15	2071.89	2071.35
OW-13	3674.35	2868.62	2071.66	2071.20
OW-14	3587.45	2833.92	2070.26	2069.96
OW-15	3824.99	2816.59	2067.92	2067.57
OW-16	3814.40	2917.17	2068.25	2068.01
OW-17	3754.98	2922.06	2068.45	2068.12
OW-18	3714.72	2923.32	2068.42	2067.99
OW-19	3743.20	2865.88	2068.06	2068.74
OW-20	3904.67	2812.32	2067.11	2066.82
OW-21	3941.32	2865.15	2067.67	2067.66

**PROJECT TITLE**  
**MILLER'S CORNER**  
**HIGHWAYS 281 AND 70**  
**WHEELER COUNTY, NEBRASKA**

**SHEET TITLE**  
**TOPOGRAPHIC SURVEY**



Ph: 402.371.6416 PO Box 1424 Norfolk, Nebraska 68702

DATE	6-20-06	DRAWN BY	JCS
PROJECT NO.	0925/12	CLIENT GROUP	007175
SCALE	1"=30'	FIELD BOOK	WHEELER CO. N-1
TITLE NAME	210938/2	PERSON	
APPROVED BY		DATE	
DATE		DATE	
DATE		DATE	
DATE		DATE	
DATE		DATE	