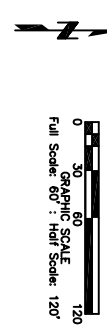


TOPOGRAPHIC SURVEY

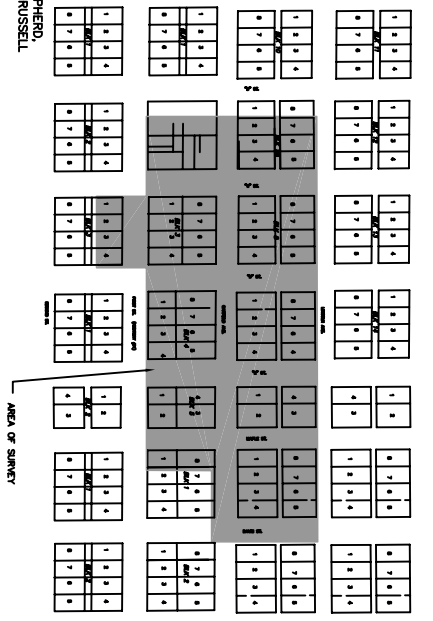


<0.0005
MW-3

MONITORING WELL ID	NORTHING	EASTING	TOP OF MONITORING WELL CAP	ELEVATION AT TOP OF NORTH EDGE
MW-1	1023.91	1181.54	97.95	97.75
MW-2	1003.52	1016.27	99.52	99.24
MW-3R	1079.38	1134.99	98.32	98.00
MW-4	884.79	1200.29	98.80	98.43
MW-5	983.62	896.12	99.05	98.72
MW-6	459.50	1494.76	98.09	97.72
MW-7	1332.10	1188.37	95.77	95.55
MW-8	1266.97	1432.06	96.69	96.37
MW-9	1082.15	1517.29	96.41	95.88
MW-10	1520.19	1342.30	93.05	94.82
MW-11	1523.08	1893.09	93.36	93.00
MW-12	1520.33	1094.85	93.56	93.10
MW-13	1201.44	842.67	98.49	98.34
MW-14	1313.93	1514.79	95.03	94.77
MW-15	1024.88	1156.74	98.49	98.11
MW-16	1053.88	1178.63	97.75	97.46
MW-17	1028.01	1200.06	97.59	97.33
MW-18	1145.93	1230.07	96.98	96.66
MW-19	1205.63	1157.18	96.61	96.20
MW-20	1192.52	1517.61	95.79	95.3
MW-21	1418.85	1514.14	94.71	94.35
MW-22	1172.01	1687.69	94.85	95.11
MW-23	1371.44	1888.01	94.41	94.11
MW-24	1361.46	1953.11	93.06	92.75
MW-25	1204.59	1149.21	96.72	96.49
MW-26	1205.19	1141.06	96.90	96.76
MW-27	1205.60	1123.52	96.85	96.51
MW-28	1445.22	1742.73	95.02	94.82
MW-29	1444.47	1755.23	94.90	94.52
MW-30	1443.46	1765.98	94.61	94.30
MW-31	1442.65	1773.71	94.52	94.21

VICINITY MAP

SCALE: NONE



LEGEND

- TV — UNDERGROUND TV LINE
- T — UNDERGROUND TELEPHONE LINE
- W — WATER LINE
- S — SANITARY SEWER LINE
- SC — SANITARY SEWER CLEANOUT
- SD — SATellite DISH
- P — POWER POLE
- LP — LIGHT POLE
- GW — GUY WIRE
- SM — SANITARY SEWER MANHOLE
- MF — MONUMENT FOUND, 1" PIPE, OR AS NOTED
- FH — FIRE HYDRANT
- GM — GAS METER
- WV — WATER VALVE
- WH — WATER SHUT OFF
- TP — TELEPHONE PEDSTAL
- PL — PROPERTY LINE
- OHE — OVERHEAD ELECTRIC LINE
- UGE — UNDERGROUND ELECTRIC LINE
- EM — ELECTRIC METER
- MW — MONITORING WELL
- AST — ABOVE GROUND STORAGE TANKS
- 10'-35' — DECIDUOUS TREE, SIZE, HEIGHT DENOTED
- 12'-25' — CONIFEROUS TREE, SIZE, HEIGHT DENOTED
- 5,000 — Benzene Isocontour
- 7,500 — Benzene Concentration (mg/L)

SURVEYOR'S STATEMENT:

I hereby state that this plot of a survey was made by me or under my supervision and is true and accurate to the best of my knowledge and that I am a duly Registered Land Surveyor under the laws of the State of Nebraska.

Jeffrey S. Ryan, R.L.S. 541
JEO Consulting Group, Inc.
North Loup, NE 68702
Phone: (402)371-6416
Email: jryan@jco.com

UTILITY CONTACTS:
ELECTRICITY — Loop Valley Rural Electric (308-728-3633)
GAS — Kinder Morgan (308-728-3633)
Water Bundry (308-870-1212)
TELEPHONE & TV — Nebraska Central Telephone Co. (888-873-6282)
WATER AND SAN. SEWER — Village of North Loup (308) 496-4362

BENCH MARK:
Finish Floor Entrance to D&H Service
Elevation 100.00 (Assumed)

NOTE:
Underground utilities shown on this drawing were surveyed from points located in the field from the local utility companies field locations or were located by hand-dug test pits. The locations of these utilities and public works department, and are shown in their approximate locations. Other underground improvement locations are unknown.

DATE	12-22-06
PROJECT NO.	08048-DBH-1130
SCALE	1"=60'
TITLE	MONITORING WELLS
FILE NAME	2-25-06
REVISION	
PLANNED BY	J.S.R.
DRAWN BY	J.S.R.
CHECKED BY	J.S.R.
DATE	12-22-06
SHEET	1 OF 1

D&H SERVICE
UG# 08048-DBH-1130
131 NORTH "C" STREET
NORTH LOUP, NEBRASKA

MONITORING WELL SURVEY

JEO
Consulting Group, Inc.
Ph: 402.371.6416 PO Box 1424 Norfolk, Nebraska 68702